

# 2017 ANNUAL REPORT ST. LUKE'S CORNWALL HOSPITAL





# St. LUKE'S CORNWALL HOSPITAL

A Member of the **Montefiore** HEALTH SYSTEM, INC.

---

## **Mission:**

St. Luke's Cornwall Hospital, a member of the Montefiore Health System, is dedicated to providing exceptional health care to improve the lives and well-being of the people in the communities we serve.

## **Vision:**

To continue as a leader in exceptional health care delivery by collaborating with our patients, providers, employees and regional partners to improve the health of our community for life. We will excel as a highly efficient organization driven by quality and service excellence.

## **Core Values:**

We commit to holding ourselves, each other and our organization to the following core values –

- Patient Centered
- Safety
- Compassion
- Collaboration
- Quality



# A MESSAGE FROM THE PRESIDENT & CEO

Dear Friends,

2017 was an exciting year for St. Luke's Cornwall Hospital (SLCH). We've undergone a great deal of transition these last several months; transition that is bringing SLCH to the forefront of healthcare transformation and delivery at its finest!

We kicked off the year by receiving formal verification as a Level III Trauma Center by the American College of Surgeons Committee on Trauma. This is a tribute to the high intensity and quality of care provided to the communities we serve during some of life's most critical moments. As we continue to expand our emergency medicine footprint, SLCH is in the midst of an \$8 million expansion of emergency services on the Newburgh campus, utilizing funding we received from the NYS Healthcare Facility Transformation Program Grant. These expansions include the addition of an MRI suite and a 10-bed observation unit. These funds will also be used to enhance patient treatment areas.



Continued integration into the Montefiore Health System (MHS) has allowed SLCH to develop a comprehensive regional strategy that will not only increase our scope within the walls of our current campuses but also across the region. In 2017, we partnered with Burke Rehabilitation Hospital, a leader in the nation for physical medicine and also a member of MHS. Working hand in hand with Burke has provided both a physical and programmatic expansion of our rehabilitation services. With construction currently underway on the Cornwall campus to house all outpatient Physical, Occupational and Speech Therapy, as well as Cardiopulmonary Rehabilitation and our Balance Center in one convenient location; we are truly transforming.

Continued growth of the SLCH Oncology Program was another major occurrence in 2017. We welcomed Dr. Shana Coplowitz, who joined us from within the Montefiore System, as Medical Director of Radiation Oncology, Dr. Veronica Ferencz, a Newburgh native and highly trained Breast Surgeon, and Dr. Diana Linetskaya, who specializes in Plastic Surgery, important additions to our growing team. These three physicians are addressing gaps in care that previously existed and are helping to round out Cancer Services at SLCH. Additionally, we are continuing to grow our Cardiology, Thoracic and Urology service lines, and our Total Joint Center and Orthopedics programs are thriving more and more with each month that passes. Our growth is not limited to our historic sites on the Newburgh and Cornwall campuses, as we also cut the ribbon on a new Center for Sleep Medicine in Fishkill last year.

Much like any other year, 2017 was filled with a great deal of recognition of the high-quality care that SLCH is privileged to provide to our community. We achieved the General Surgery Excellence Award from Healthgrades, naming SLCH amongst the top 10% nationally; the SLCH Institute for Metabolic and Bariatric Surgery was accredited as a comprehensive center under the Metabolic and Bariatric Surgery Accreditation and Quality Improvement Program (MBSAQIP®); SLCH was yet again the recipient of the American Stroke Association's Get with The Guidelines®-Stroke Gold Plus Achievement Award for the ninth consecutive year; and the Joint Commission recognized SLCH as a 2017 Pioneers in Quality™ Expert Contributor for the hospital's Proven Practice in electronic clinical quality measure (eCQM) adoption and utilization for quality improvement. SLCH was also named in the Joint Commission's 2017 Annual Report on America's Hospitals: Improvement Quality and Safety. To round out the year, on Thanksgiving Day, our community hospital was certified as a Great Place to Work®, a tribute to the truly special team we have here at SLCH, placing our small community hospital in the same ranks as the Cleveland Clinic, Mayo Clinic, and St. Jude's Children's Research Hospital.

The rapid transformation of St. Luke's Cornwall Hospital would not be possible without the continued support of our donors. The Kaplan Family Foundation's generosity to SLCH has been a pillar of our hospital, and 2017 was no different. In June 2017, The Kaplan Family Foundation fulfilled their more than \$1.3 million grant to the Birthing Center and Neonatal Intensive Care Unit (NICU), allowing for both physical enhancements and advanced technologies. Additionally, the Kaplan Family provided the funds necessary to decrease the rate of multiple drug resistant infections and hospital acquired infections by awarding the hospital a \$245,000 grant which is enhancing our ability to educate the community on infection prevention measures, as well as provided for the purchase of Surfacide, a state-of-the-art ultraviolet disinfection system, to more effectively clean our patient care and public areas. The purchase of this equipment was made possible through a personal gift from the Kaplan Family in honor of Dr. Christine Jelalian.

2017 was truly a banner year. As we are already halfway through 2018, this year is shaping up to be equally as exciting and transformative. Thanks to our partnership with MHS, St. Luke's Cornwall Hospital has become part of something bigger, to serve you better. I look forward to the path ahead, we truly are making history right here in the Hudson Valley!

*Joan Cusack-McGuirk*  
Joan Cusack-McGuirk

SLCH President & CEO

# LEADERSHIP

## BOARD OF TRUSTEES



Geoffrey Brackett, DPhil  
*2017 Chairman*

Kevin White  
*Secretary*  
Anthony Campagiorni  
Christopher Catania  
Nick Citera  
John Finger

Susan Green-Lorenzen  
Glen L. Heller, Esq.  
Ellen M. Kelly  
Thomas P. Kennedy  
Jeffrey Menkes

David Potack  
*2017 Vice-Chair*

Roberto Padilla  
John V. Pelella  
Michelle Rider, Esq.  
Mary Ellen Rogulski



## ST. LUKE'S CORNWALL HEALTH SYSTEM FOUNDATION



Eric Najork  
*2017 Chairman*

Joan Cusack-McGuirk,  
*President and CEO*  
Charles A. Walwyn, III,  
*Vice-Chair*  
Frederick W. Dabroski, Jr.,  
*Secretary*  
Thomas J. Gibney,  
*Treasurer*  
Anne Marie Schoonhoven,  
*Executive Director*  
Jill Cappa

Father Mark Connell  
Jeffrey W. Degen, MD  
David Harrison, MD  
Robert E. Hatfield, Jr.  
Giovanni Palladino  
John V. Pelella  
Margaret Pelella  
Manita Sawhney, DO  
John H. Smith, Jr.

## ST. LUKE'S CORNWALL HOSPITAL AUXILIARY



Margaret Pelella  
*2017 Chair*

Renay Bevins  
Christine Cahill  
Jo-Ann Campagiorni  
Jill Cappa

Kimberly Hertz  
Susan Kunkel  
Cheryl LeChant  
Bernadette Orland

Danielle Randazzo  
Mary Ellen Sayegh  
Kathy Sheehan  
Bettina Sturm

# LEADERSHIP

## MEDICAL EXECUTIVE COMMITTEE



David Harrison, M.D.  
*Chair, President*

Mehul Patel, M.D., *Vice President*  
Murali Perumal, M.D., *Secretary/Treasurer*  
Gina Del Savio, M.D., *Immediate Past-President & Credentials Chair*  
Kalpesh Shukla, M.D. & Russell Marwin, M.D., *Co-Chairs, Department of Anesthesiology*  
Sachin Shah, M.D., *Chair, Department of Emergency Medicine*  
Nivarkumar Shah, M.D., *Chair, Department of Medicine*  
Andrei Munzer, M.D., *Chair, Department of OB-GYN*  
Juan E. Cuartas, M.D., *Chair, Department of Orthopedic Surgery*  
Yu Wang, M.D., *Chair, Pathology/Laboratory*  
Prabhakar Kocherlakota, M.D., *Chair, Department of Pediatrics*  
Joseph Racanelli, M.D., *Chair, Department of Radiology*  
Jeffrey Degen, M.D., *Chair, Department of Surgery*  
Riaz Chaudhry, M.D., *Member-at-Large, Department of Medicine*  
Jaspreet Singh, D.O., *Member-at-Large, Department of Surgery*  
Munir Shikari, M.D., *Member-at-Large, Department of Medicine*  
John Uhorchak, M.D., *Member-at-Large, Department of Orthopedic Surgery*

## ADMINISTRATION



Joan Cusack-McGuirk  
*President & CEO*

Thomas J. Gibney, *Senior Vice-President and CFO*  
Christine Jelalian, M.D., *Past Chief Medical Officer*  
Gina Del Savio, M.D., *Chief Medical Officer*  
Jill Barton, *Vice President, Revenue Cycle*  
Daniel Bengyak, *Vice President, Human Resources*  
Katherine Dabroski, *Vice President, Marketing, Public and Community Relations*  
Margaret Deyo-Allers, RN, BSN, MSN, ANP, *Vice President, Patient Care Services*  
Mary Kelley, *Vice President, Quality Management*  
Daniel Maughan, RN, BSN, MBA, FNP-C, *Senior Vice President, Transformation*  
Anne Marie Schoonhoven, *Executive Director, Foundation*  
Dwayne Simmons, *Chief Information Officer*  
Joseph Surace, *Vice President, Operations*

*\*current administration*

# EXPANSION OF SERVICES



## A LEVEL III TRAUMA CENTER AND LEADER IN EMERGENCY MEDICINE IN THE HUDSON VALLEY

As a vital access provider, St. Luke's Cornwall Hospital, in partnership with the Montefiore Health System is dedicated to meeting the healthcare needs of our community. As the Cornwall campus has shifted to an entirely outpatient model, the care provided on the Newburgh campus, specifically the Emergency Department and verified Level III Trauma Center, is undergoing significant transformation.

In 2017, SLCH announced its securement of an \$8 million commitment from the New York State Department of Health under the Statewide Health Care Facility Transformation Program. This funding will allow SLCH to expand its Emergency Department including the following enhancements:

- A dedicated Observation Unit will provide a centralized space to serve patients who require additional care but not necessarily an inpatient admission;
- An MRI Suite will allow patients to receive all diagnostic testing without the added burden of a transfer;
- A triage space and expansion of Fast Track will enhance patient flow and allow for faster patient assessment;
- Expanded parking for EMS providers will improve the patients' transitions of care.

This is an exciting step for St. Luke's Cornwall Hospital as we leap into a regional health strategy with the Montefiore Health System. The expansion of emergency and trauma services will make the often-difficult experience of being in an emergency room much easier and more efficient for our patients.

# THE LITTMAN CANCER CENTER: BIG CITY CARE CLOSE TO HOME

Throughout 2017, the SLCH Oncology program grew by leaps and bounds as a result of our affiliation with the Montefiore Health System. Dr. Shana Coplowitz from the Montefiore Health System joined our team as the new Medical Director of Radiation Oncology. We also welcomed a new Breast Surgeon, Dr. Veronica Ferencz, further expanding the scope of our care. Dr. Ferencz joined us from Crystal Run Healthcare, and is a native resident of the community we serve. Additionally, Dr. Diana Linetskaya, a plastic and reconstructive surgeon, joined our team last year. SLCH has also expanded our Palliative Care and Support Services team to include Dr. Kirti Joseph, who works with both inpatient and outpatient cases, to assist your comfort and care.

A focus for 2018 will be continued enhancements to our program including increased education and prevention efforts as well as cancer screenings.



# A GREAT PLACE TO WORK®



On Thanksgiving Day 2017, St. Luke's Cornwall Hospital received incredible news. The hospital had been officially recognized as a Great Place to Work®. SLCH has earned this credential based on extensive ratings provided by our employees in anonymous surveys.

Survey results highlighted the manner in which SLCH employees take pride in their jobs, the communication that exists amongst coworkers, and the organization's overall contribution to the community. SLCH is the first and only hospital in the Hudson Valley to be certified as a Great Place to Work® and is one of only 23 hospitals in the United States to receive this recognition. Other members in this select group include The Mayo Clinic, Cleveland Clinic and St. Jude's Children's Research Hospital.

This recognition is a tribute to the amazing culture and spirit that exists within the four walls of the SLCH campuses and beyond. Key areas of success for this survey included 94% of participants indicating that they take great pride in their jobs, 90% of respondents feeling that there is great communication that exists throughout the organization, and 91% feeling that SLCH provides a great work atmosphere.

A summary of these ratings can be found at:  
<http://reviews.greatplacetowork.com/st-luke-s-cornwall-hospital>

"Being named a Great Place to Work® validates what we all know to be true. We are truly a family at St. Luke's Cornwall Hospital, providing compassionate care to our friends and neighbors in the community. This is a terrific tribute to the culture that exists throughout our organization. I am incredibly proud."

**Joan Cusack-McGuirk**  
President & CEO





# EXCELLING IN DELIVERY SYSTEM REDESIGN

---

St. Luke's Cornwall Hospital has exceeded its DSRIP Performance Improvement Milestones since inception. The hospital has been recognized for both our work in decreasing Asthma presentations and working with community based organizations to provide better linkage to behavioral health.

In 2017, the American Hospital Association noted that asthma patients are breathing easier thanks to educational services and follow-up care provided through a partnership between the Hudson Valley Asthma Coalition and SLCH.

HANYS also highlighted SLCH for recognizing that emergency department (ED) psychiatric patients need alternatives to transfer. The transferring process leads to long waiting time, escalation of patients' behavioral health issues and added costs.



# ST. LUKE'S CORNWALL MEDICAL GROUP RECOGNIZED AS LEVEL 3 PATIENT CENTERED MEDICAL HOME



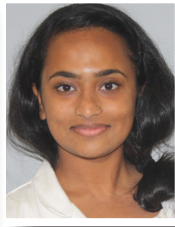
Nicholas  
Bambino, MD



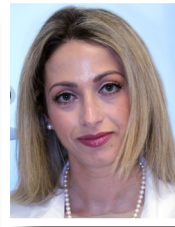
Utica  
Belfield, MD



James V.  
DiLorenzo, MD



Kirti  
Joseph, MD



Margarita  
Kogan, MD



Diana  
Linetskaya, MD



Manita  
Sawhney, DO

The St. Luke's Cornwall Medical Group was recognized by the National Committee for Quality Assurance with their highest distinction as a Level 3 Patient Centered Medical Home (PCMH) for its dedication to providing a commitment to quality improvement within the practice and a patient-centered approach to care that results in patients that are happier and healthier. The PCMH is a model of care that emphasizes care coordination and communication to transform primary care into "what patients want it to be." There are six core concepts that must be demonstrated by a practice in order to earn recognition as a PCMH: team-based care, knowing and managing your patients, patient-centered access and continuity, care management and support, care coordination and transitions, and performance measurement/quality improvement.

## SYSTEMIZED PARTNERSHIPS ENHANCING CARE BOTH LOCALLY AND BEYOND...

St. Luke's Cornwall Hospital's partnership with the Montefiore Health System has connected our community hospital to national leaders in care. Care that allows us to enhance to our existing programs, expanding a scope of services that otherwise would not have been possible locally.

In 2017, SLCH partnered with Burke Rehabilitation Hospital, also a member of the Montefiore Health System, and a leader in the country for physical and rehabilitative medicine. Together, we have increased rehabilitative services at SLCH, now providing physical, occupational and speech therapies, as well as cardiac and pulmonary rehabilitation, cognitive medicine and a Balance Center. Currently underway, is the renovation and construction of SLCH's Cornwall campus, which will soon house all rehabilitative and physical medicine therapies in one convenient location.



**REHABILITATION @**  
**St. LUKE'S CORNWALL**  
**Burke Rehabilitation Hospital**  
Partner Facility

Renovations are underway to enhance the rehabilitation and physical medicine space on the Cornwall campus.

# AWARDS AND RECOGNITION

## GENERAL SURGERY EXCELLENCE AWARD

Every year, Healthgrades evaluates hospital performance at nearly 4,500 hospitals nationwide for 34 of the most common inpatient procedures and conditions. This achievement is part of findings released by Healthgrades and is featured in their 2018 Report to the Nation, which includes detailed study methodology and can be found at [www.healthgrades.com/quality](http://www.healthgrades.com/quality). The new report demonstrates how clinical performance continues to differ dramatically between hospitals regionally and nationally.



## HEALTHGRADES® FIVE STAR RECIPIENT

Healthgrades® has recognized St. Luke's Cornwall Hospital for its high quality patient care. We have received this recognition in Natural Childbirth for three consecutive years (2015-2017).



This 5-star rating indicates that the hospital's clinical outcomes are statistically significantly better than expected when treating the condition or performing the procedure being evaluated. Providing quality care to our patients is our number one priority.

## A GREAT PLACE TO WORK®

St. Luke's Cornwall Hospital (SLCH) has been certified as a great workplace by the independent analysts at Great Place to Work®. SLCH has earned this credential based on extensive ratings provided by its employees in anonymous surveys. SLCH is the first and only hospital in the Hudson Valley Region to be certified as a Great Place to Work® and is one of only 23 hospitals in the United States to receive this recognition.



## HEALTH CARE'S MOST WIRED®

For the fourth straight year, St. Luke's Cornwall Hospital (SLCH) has been included on the list of Health Care's Most Wired® hospitals, ranking among the nation's best in using information technology to improve patient care. SLCH has worked diligently to enhance its information technology infrastructure throughout the last four years, making it easier for patients, as well as providers to access necessary data in timely and convenient fashion.



## BARIATRIC ACCREDITATION

St. Luke's Cornwall Hospital's Institute for Metabolic and Bariatric Surgery has been accredited as a Comprehensive Center under the Metabolic and Bariatric Surgery Accreditation and Quality Improvement Program (MBSAQIP®). With this accreditation, patients seeking surgical treatment for severe obesity and its related conditions have a high-quality choice for receiving care at a nationally accredited program that meets the highest standards for patient safety and quality of care in the greater Hudson Valley Region area.

## PIONEERS IN QUALITY

The Joint Commission has recognized St. Luke's Cornwall Hospital as a 2017 Pioneers in Quality™ Expert Contributor for its contributions to electronic clinical quality measure (eCQM) data for quality improvement in health care. SLCH is one of just nine hospitals recognized by The Joint Commission in 2017 for contributing eCQM knowledge and utilization practices for sharing with other accredited hospitals.



PIONEERS IN QUALITY.

## GET WITH THE GUIDELINES® — STROKE GOLD PLUS QUALITY ACHIEVEMENT AWARD

St. Luke's Cornwall Hospital (SLCH) has received the American Heart Association/American Stroke Association's Get With The Guidelines®-Stroke Gold Plus Quality Achievement Award for the 9th consecutive year. The award recognizes the hospital's commitment to ensuring stroke patients receive the most appropriate treatment according to nationally recognized, research-based guidelines based on the latest scientific evidence.



# THE KAPLAN FAMILY BIRTHING CENTER



SLCH is extremely grateful for the Kaplan Family Foundation's contribution of more than \$1.3 million to the Kaplan Family Birthing Center, which was unveiled in 2017. The Kaplan Family Birthing Center is comprised of three departments: Labor & Delivery, Mother/ Baby, and the Elaine Kaplan Neo-Natal Intensive Care Unit. Over the past year, the beautification and upgrades to the units create a serene, home-like environment that supports the health and well-being of new families, and has provided clinicians with the state-of-the-art equipment and technology needed to give every child the best start in life.

Some of the patient and care-related improvements include:

- Family Lounge & Improved Waiting Area
- Patient Room Furniture Upgrades
- Bedside Infant Warmers
- Maternal EKG & Fetal Monitoring System
- Obstetrical Operating Room Upgrades
- Early Detection/Prevention Equipment

The Kaplan Family Foundation's grants to SLCH have realized a birthing center that provides high-quality, patient-centered care in a compassionate, comfortable and close-to-home setting.



# REACHING FOR THE STARS WHILE STAYING TRUE TO OUR ROOTS

Firmly planted in the Hudson Valley for more than 140 years,  
**St. Luke's Cornwall Hospital** is branching out to provide  
comprehensive, exceptional services that improve the lives of our community.

St. Luke's Cornwall Hospital, a member of the Montefiore Health System, is committed to excellence and meeting the healthcare needs of the Hudson Valley. With comprehensive services such as Joint Replacement, The Littman Cancer Center, a Cardiac Catheterization Lab, Metabolic and Bariatric Surgery, and a newly verified Level III Trauma Center, we are here to help you face your health challenges head on when you need us most.

*St. Luke's Cornwall Hospital, with you for life.*

- |                                   |                                     |                                  |
|-----------------------------------|-------------------------------------|----------------------------------|
| ▪ Orthopedics & Joint Replacement | ▪ St. Luke's Cornwall Medical Group | ▪ Balance Center                 |
| ▪ Back & Spine Surgery            | ▪ Urology Services                  | ▪ Cardiopulmonary Rehabilitation |
| ▪ Bariatric Surgery               | ▪ Physical & Occupational Therapy   | ▪ Pain Management                |
| ▪ Cancer Services                 | ▪ Level III Trauma Center           | ▪ Sleep Medicine                 |
| ▪ Cardiovascular Institute        | ▪ General Surgery                   | ▪ Wound Care                     |
| ▪ Birthing Center/NICU            | ▪ Ear, Nose & Throat                |                                  |

*With more to come ...*

A Member of the  
**Montefiore**  
HEALTH SYSTEM, INC.

 **St. LUKE'S CORNWALL HOSPITAL**  
*With you for life*

# SLCH COMMUNITY ENGAGEMENT

## NEWBURGH ARMORY SCHOLARS & SCRUBS

SLCH embarked on an important collaboration with the Kaplan Family, Newburgh Free Academy and the Unity Center at the Newburgh Armory. The “Scholars in Scrubs” program is designed to provide information and education to children who are, or may someday be, interested in a career in healthcare.

The idea evolved considerably since SLCH entered into the partnership with Mr. William Kaplan and NFA to provide healthcare education to elementary school children, and has become part of a larger vision that Mr. Kaplan has for children in elementary, middle, and high school. The goal is to incorporate healthcare information with the foundations of education: math, science and reading.

Volunteers go each week the program is in session to work with the NFA teachers and student volunteers. One lesson focused on different healthcare careers. Activities included reading a story to the younger group, and helping them make a stethoscope to listen to their heartbeat. The session concluded with a writing exercise about what they had learned. The older group also built and used their own stethoscope, but instead of a story they learned to find their pulse and count it before and after exercise.



## PARTNERING WITH OUR LOCAL LIBRARIES

Known as places of learning, the local libraries played a key role in St. Luke’s Cornwall Hospital’s community education efforts in 2017. Our partners at the Cornwall Public Library and the Howland Public Library in Beacon were particularly eager to host healthcare related programs in 2017, partnering on nearly monthly presentations. The program has since expanded to the Newburgh Free Library and the Chester Public Library.



# SLCH COMMUNITY ENGAGEMENT

## COMMUNITY HEALTH & WELLNESS DAY

SLCH played a leading role in a Community Health & Wellness Fair held on July 22 at SUNY Orange in Newburgh. The event was produced in partnership with SUNY Orange, Independent Living Inc., Inspire, Cornell University Cooperative Extension, Cornerstone Family Healthcare, ShopRite of Vails Gate, Orange County and Access: Supports for Living. In addition to many local health-related vendors, education topics included sexual health, stress reduction, Narcan training, mental health, nutrition/heart health, sun safety and HPV education.



## GET YOUR WALKING SHOES ON AMERICAN HEART ASSOCIATION TRI-COUNTY HEART WALK

2017 was yet another year of a terrific partnership with the American Heart Association. With Joe Surace, Vice President of Operations at SLCH serving as the incoming Chairman of the 2018 Tri-County Heart Walk, our organization was more involved than ever before, working closely with the AHA on stroke education and heart healthy initiatives.



## AMERICAN CANCER SOCIETY MAKING STRIDES AGAINST BREAST CANCER WALK

St. Luke's Cornwall Hospital has maintained continuous dialogue with the American Cancer Society to strategize the best possible partnership between the two organizations. We recently teamed up with our colleagues who work in conjunction with the Montefiore Health System team to further expand our efforts with the ACS. In 2017, we participated in the Making Strides Against Breast Cancer Walk as well as the Relay for Life in the Town of Newburgh.



## MARCH OF DIMES MARCH FOR BABIES WALK

St. Luke's Cornwall Hospital was once again proud to participate in the annual March of Dimes' March for Babies Walk. The 2017 version was the 47th annual walk to raise money to fight birth defects. The mission of the March of Dimes is to improve the health of babies by preventing birth defects, premature birth and infant mortality. Money raised by the March of Dimes goes toward research grants, maternal and child health community grants, and lifesaving therapy for babies.



# HEALTHCARE ADVERTISING AWARDS

Healthcare Marketing Report announced the winners in the 35th Annual Healthcare Advertising Awards, and St. Luke's Cornwall Hospital was honored with a Silver Award in the Newspaper Advertising Category for one of its orthopedics and sports medicine advertising concepts.

In 2017, more than 4,000 entries were received, making it the largest healthcare advertising awards competition and one of the ten largest of all advertising awards.

The Healthcare Advertising Awards is the oldest, largest and most widely respected healthcare advertising awards competition. The awards are sponsored by Healthcare Marketing Report, the leading publication covering all aspects of healthcare marketing, advertising and strategic business development.

A national panel of judges were engaged in reviewing all entries based on creativity, quality, message effectiveness, consumer appeal, graphic design and overall impact. Gold awards were given to 360 entries, Silver Awards to 317 entries and Bronze Awards to 280 entries.



**ORTHOPEDICS AT ST. LUKE'S CORNWALL HOSPITAL.** The Orthopedics team at SLCH is comprised of highly trained physicians who handle both the surgical and non-surgical treatment of foot and ankle, hand, spine and sports medicine injuries, in addition to joint replacement. Our team works with each individual patient throughout their entire journey. We are dedicated to providing for the comprehensive orthopedic needs of the Hudson Valley. To learn more about Orthopedics at St. Luke's Cornwall Hospital, please visit [www.stlukescornwallhospital.org](http://www.stlukescornwallhospital.org) or call (845) 568-2831.



# COMPASSIONATE COMMUNITY CARE

When mom-to-be Brittney Lopez arrived at St. Luke's Cornwall Hospital for the birth of her first child, she had a special request: have husband, Justin Fowler, a Military police officer deployed by the Army National Guard, be a part of the birth from Afghanistan.

The SLCH team quickly started planning to make this request a reality. With much coordination, the SLCH Birthing Center staff, Dr. Andrei Munzer, Dr. Stephen Cestari, Information Technology (IT) Supervisor Dan Bacher and IT Associate Jay-Ar Calderon were able to connect Brittney and Justin via FaceTime, allowing them to experience the birth of their son together.

"Justin was able to be with me before, during and after labor," said Brittney. "I am so happy that we got to experience it together."

St. Luke's Cornwall Hospital was recently named a Most Wired Hospital for the fourth consecutive year, a tribute to its IT infrastructure.

Mr. Fowler was deployed in May 2017. The couple resides in the Town of Newburgh.



"Patient-centered care is our focus at St. Luke's Cornwall Hospital. We are so proud to be able to provide our patients and their families with high quality care and advanced technologies."

**Joan Cusack-McGuirk**  
President & CEO



# A DAY TO REMEMBER ...

December 9, 2017, is a day that so many of us at St. Luke's Cornwall Hospital will always remember. What started as a brief discussion with our community partners in a regularly scheduled meeting regarding how SLCH could help those in need during the 2017 holiday season, turned into "Holiday at SLCH," a magical day that provided more than 100 families the opportunity to shop for their loved ones at no cost and offer an experience unlike any other.

Families were escorted from the main lobby to the Drake Conference Room picking out everything from jeans, shirts, socks, coats, gloves, shoes and other donations – enough for everyone and all donated by our SLCH family. Santa stopped by to see the children, and greeted each with a toy. The donations collected by SLCH employees, family members and friends were truly incredible. The overall willingness to participate in this initiative was overwhelming. Many Newburgh Free Academy students donated their time as well, providing haircuts and manicures to those attending. St. Luke's Cornwall Hospital is proud to be a part of such a great community, one that comes together to help each other.



# 2017 DONORS

## **\$400,000 +**

The William and Elaine Kaplan Family  
Private Foundation  
Joan Kaplan  
Sheila Kaplan  
Deborah Kaplan Sergi  
Amy Kaplan, in memoriam

## **\$20,000 – \$49,999**

Fanning Charitable Remainder  
Unitrust  
RestorixHealth  
St. Luke's Cornwall Hospital  
Medical Staff  
Unitex Textile Rental Services

## **\$15,000 – \$19,999**

Harriet W. Cornell Estate  
KeyBank Foundation  
Mid-Hudson Anesthesiologists, P.C.  
Montefiore Medical Center

## **\$10,000 – \$14,999**

Coca-Cola Bottling Company of  
New York, Inc.  
Collection Bureau of the  
Hudson Valley, Inc.  
Dr. and Mrs. Juan E. Cuartas  
Dr. and Mrs. Jeffrey W. Degen  
The Degen Family Fund  
Dr. Gina C. Del Savio and  
Mr. Michael Lawyer  
Fresenius Medical Care  
GNYHA Ventures, Inc.  
Joan Cusack-McGuirk and John  
McGuirk  
Mobile Life Support Services, Inc.  
Mr. and Mrs. Eric S. Najork  
Orthopedics & Sports Medicine PC  
Patient Matters  
West Hudson Imaging, P.L.L.C.

## **\$5,000 – \$9,999**

Alliance Bernstein  
Barton Chevrolet Cadillac  
Bonura Hospitality Group  
Dr. Geoffrey L. Brackett and  
Ms. Danyelle K. Means

Clifton, Budd & DeMaria, LLP  
Construction Contractors Association  
of the Hudson Valley  
Cornerstone Family Healthcare  
Crystal Run Healthcare L.L.P.  
Mr. and Mrs. Frederick W. Dabroski, Jr.  
Dr. and Mrs. Michael E. Doyle  
Dr. Michael and Mrs. Kristin Doyle  
Fabricators, Erectors & Reinforcing  
Contractors Association  
David and Sarah Harrison  
Horizon Medical Group, P.C.  
Dr. Christine Jelalian and  
Mr. Peter Curtis  
Laborers' International Union of N.A.  
Local 17  
Mrs. Elfriede Littman  
The Littman Family  
Marist College  
Premier Medical Group of the  
Hudson Valley, P.C.  
Quigley Bros. Funeral Home  
Mr. and Mrs. Alan Seidman  
Shotgun The Film, Inc.  
John H. and Ruth C. Smith  
Mr. and Mrs. John H. Smith, Jr.  
Surgical Affiliates Management  
Group Inc.  
WILLCARE  
William A. Smith & Son Insurance  
Wingate Healthcare

## **\$2,500 – \$4,999**

Anonymous  
Access: Supports for Living  
Anheuser-Busch Companies  
Anna K. Wait Fund  
Ron and Jill Barton  
Mr. and Mrs. Gary D. Berg  
Burke Rehabilitation & Research Hospital  
Catania, Mahon, Milligram & Rider, PLLC  
Central Hudson Gas & Electric  
Corporation  
Father Mark Connell  
Crothall Healthcare, Inc.  
Mrs. Margaret Deyo-Allers  
Linda and Gregory Dombroski  
Drake Loeb P.L.L.C.

Feldman, Kleidman, Coffey,  
Sappe & Regenbaum's  
Gentech, Ltd.  
Lesley Hagerty  
Hazard's Pharmacy  
Mr. and Mrs. Glen L. Heller  
Holt Construction Corp.  
Kathie Holter  
James and Mary Kelley  
Mr. Richard E. Kopelman  
John Larsen, II  
Mount Saint Mary College  
Painters Local 155 Labor  
Management Coalition  
Mr. and Mrs. John V. Pelella  
Perreca Electric, Inc.  
Dr. John Portelli and Dr. Robin Portelli  
Michelle Rider, Esq.  
Mr. and Mrs. Joseph Sayegh  
Mr. and Mrs. Joseph Surace  
Mr. and Mrs. Rodney Tudor  
United WestLabs, Inc.  
Vijay and Ellen Venugopal

## **\$1,000 – \$2,499**

Anonymous (2)  
Abilities First, Inc.  
Sean and Tonya Addy  
All Bright Electric  
Dr. and Mrs. Nicholas G. Bambino  
Ms. Trish Beck  
Mr. Raymond Earle Bell, Jr.  
Mr. and Mrs. Dan Bengyak  
Mr. and Mrs. Peter Bonk  
Mr. and Mrs. Jon-Paul Brancato  
Dr. Louis and Jill Cappa  
Cappa Podiatry  
Mr. and Mrs. Charles W. Cassidy  
Mr. Christopher L. Catania and  
Ms. Eileen Brashares  
Cornwall Wines & Spirits  
The Cowart Family  
Mr. Sean Dabroski  
D-Ben Security Systems, Inc.  
Mr. and Mrs. Philip J. DeAngelo  
Dr. and Mrs. James V. DiLorenzo

# 2017 DONORS

Empire Blue Cross and Blue Shield  
Empire State Bank  
ENT Faculty Practice LLP  
Ferdinand and Fannie Stern  
Charitable & Educational Foundation  
George Henry May Memorial Fund  
Mr. and Mrs. Robert E. Hatfield  
Mr. and Mrs. Victor P. Henderson  
Hospice of Orange and Sullivan  
Counties  
Hudson Valley Chrysler Dodge  
Jeep Ram  
IBEW Local 363  
Beverly Keefer  
Ellen and Michael Kelly  
Mr. Michael Kirtio  
Kiwanis Club of Newburgh  
J. Dolly and George R. Kohler  
Mr. and Mrs. Michael A. Kopelman  
Mr. and Mrs. David S. MacFarland  
Mr. Daniel Maughan  
Mr. John J. McDonald  
Medtronic, Inc.  
Mercer  
Mrs. Maxine Monell  
Nugent and Haeussler, P.C.  
Orange Bank & Trust Company  
Orange County NY H.O.G.  
Mr. and Mrs. Patrick O. Ortland  
Phoenix Surgical Services  
RBT CPAs, LLP  
Sapphire  
Anne Marie and Richard Schoonhoven  
Sheet Metal Workers Local #38  
Shuree Abrams Foundation  
Mrs. Anne Sidamon-Eristoff  
Smitchger Realty  
Suburban Hospital Alliance of  
NYS, LLC  
Thomas J. Kempton, Jr. Inc.  
Tri-State Bariatrics  
United Healthcare  
VMI Communications  
Mr. and Mrs. Kevin White

## **\$500 - \$999**

Anonymous (3)  
Dr. Lori Anderson  
Behavioral Health Services of the  
Hudson Valley  
Dr. and Mrs. John C. Bivona, Jr.  
Ms. Jeanne Boydston  
Broadway Tailors  
Carrier Commercial Service  
Mr. and Mrs. Paul Cobuzzi  
Mr. and Mrs. Gregory Crisci  
Dr. Ronald P. Cuffe and  
Ms. Marie O'Hanrahan  
Mr. and Mrs. William Drew  
Ms. Donna Florie  
Focus Media, Inc.  
Focused Wealth Management  
Dr. and Mrs. Richard Gosselin  
Mr. and Ms. Richard Greenblatt  
Dr. and Mrs. Stanley L. L. Grossman  
Mr. Kevin Hayes  
HealthQuest  
Highland Associates, LTD  
Hollenbeck Pest Control  
Mr. and Mrs. Douglas J. Hovey  
Inspire - The CP Center  
Ironworkers Local 417  
Mr. and Mrs. Charles Keller  
The Honorable Mr. and  
Mrs. William J. Larkin, Jr.  
Dr. and Mrs. William Lee  
Venetta Lewis  
Mr. and Mrs. Salvatore A. Lucia  
Mary T. Luvera  
M & R Energy Resources Corp.  
Mr. David Mancari  
The Valiamplackal Family  
Mr. Marcel Martino  
Katie McKnight  
Mechanical Contractors Association  
Mr. George Michaels  
Milliman  
Mr. James Montgomery  
Mrs. Susan D. Najork  
Dr. and Mrs. Roger Newman  
Northeast Regional Council of  
Carpenters Local 279

Dr. and Mrs. Anthony Patrello  
Ellen Phair  
Phreesia, Inc.  
Plumbers & Steamfitters Local 373  
Cathy Kuttner and Dick Polich  
Mr. and Mrs. Kevin Powers  
Eugene Randazzo  
Dr. John T. Respass and Dr. Kristin Maria  
Perocho Mercado  
Rhinebeck Bank  
Rider, Weiner & Frankel  
Mr. and Mrs. Robert S. Ross  
Rotary Club of Greater Newburgh  
Ms. Melissa Scalzo  
Mr. and Mrs. Timothy G. Scannell  
Kathleen Sheehan  
Ms. Emily Smith  
Mr. and Mrs. Joshua Sommers  
Sonata Group, Inc.  
In Memory of Matthew Geoghegan  
SUNY Orange  
Ms. Patricia Szymczak  
Mr. and Mrs. Elliot S Tetenbaum  
Mr. and Mrs. Ralph Thompson  
Transamerica Life Insurance Company  
Mr. and Mrs. Marc Uhrik  
West Point Tours, Inc.

## **\$1 - \$499**

Anonymous (8)  
Dr. and Mrs. Adel Ramsey Abadir  
Mr. and Mrs. Ronald Albrechtsen  
Mr. and Mrs. David J. Albright  
Ms. Sandra Alemany  
Mr. and Mrs. Timothy Alessi  
Maria Alonso-Stein  
Mr. and Ms. Paul R. Anderson-Winchell  
Mr. Nicholas Aritabile  
Mr. and Mrs. Edward M. Ashton  
Ms. Mary P. Bailey  
Dr. Brooke N. Bair  
Dr. and Mrs. John W. Baker II  
Mr. and Mrs. Daniel Bannan  
Ms. Irena Barbanel  
Mr. and Mrs. James T. Beesmer  
Trish Benninger  
Mrs. Anna Berrian

# 2017 DONORS

---

Dr. and Mrs. James M. Bersig  
Mr. and Mrs. Daniel Bloom  
Mr. Kris Bloomer  
Mr. Joseph A. Bonura, Jr.  
Ms. Gwen Borsenberger  
Ms. Diane L. Bossley  
Nick Bower  
Boys and Girls Club of Newburgh  
Hannah L. Brooks, MD  
Ms. Charella Brown  
Mr. and Mrs. William Brunell  
Mr. and Mrs. Guillermo Buendia  
Mr. Paul Byrne  
Ms. Margaret Calderalo  
Mr. and Mrs. Anthony Campagiorni  
Mr. and Mrs. Richard P. Capicchioni  
H. Janelle Carr, DNP, The Littman  
Cancer Center  
Ms. Barbara Catherall  
Catholic Charities Community  
Services of Orange County  
Leonard and Evelyn Cavicchio  
CCS Network Solutions  
Ms. Kaitlyn Champagne  
Dr. Wendy Cheng  
Ms. Kelley Chirichella  
Dr. Muhammad R. Chowdhury  
Mr. Brian Colley and  
Ms. Ana Fuentes Arredonda  
Community Foundations of the  
Hudson Valley  
Mr. Thomas Confrey  
Dr. Kenneth E. Cool and  
Dr. Linda Evers Cool  
Mr. and Mrs. Dominic Cordisco  
Ms. Molly Croce  
Ms. Maureen Crush and  
Mr. Robert Whelan  
Ms. Linda Cuomo  
Ms. Marie Curtis  
Mr. and Mrs. Fred W. Dabroski  
Mr. and Mrs. Mark Daigle  
Ms. Elaine D'Aprile  
Mr. Felix Davelman  
Evajoyce B. Davis

Mr. and Mrs. John F. Dest  
Mr. and Mrs. James E. Devitt  
Mr. Kyle Diesel  
Mr. Peter DiGregorio  
Mr. and Mrs. Manolito Dizon  
Mr. James Dollaway  
Dr. and Mrs. Chris Donikyan  
Natassia P. Donohue  
Ms. Fran Drake  
Mr. and Mrs. Carl DuBois  
Mr. and Mrs. Harry E. Eckstein  
Ms. Debbie Edelen  
Mr. and Mrs. Donald O. Eisnor  
Mrs. Lillian A. Fitch  
Mr. and Mrs. Michael Flamholtz  
Mr. and Mrs. William Fletcher  
Michael and Gail Fogarty  
Peter Forcelli  
Mr. and Mrs. Jeffrey Fox  
Mr. and Mrs. Charles E. Frankel  
Friends of Steve Neuhaus  
Mrs. Sylvia Ganz  
Ms. Jasmeet Garcha  
Mr. Peter Garcia  
Mr. Jacob Gaydos  
Mr. and Mrs. Jody E. Gerbes  
Mr. and Mrs. Christopher Gerver  
Mr. and Mrs. Michael O. Gittelsohn  
Mr. Dean Golemis  
Ms. Clara L. Gould  
Mr. and Mrs. J. Scott Greer  
Mr. Andrew Greher  
Kenneth E. Growney  
Mr. Joseph Guarino  
Mr. James Guilford, Jr.  
Brian Gunning  
Ms. Jolanta Hacker  
Mr. and Mrs. Patrick R. Harris  
Mr. Graeme Harrison  
William and Margaret Hauser  
Mrs. Marilyn Hearn  
Ms. Jennie Hernandez  
Mr. and Mrs. Wilbur R. Higgins, Jr.  
Ms. Teresa K. Hoffman  
Mr. and Mrs. Richard J. Hollahan  
Mr. and Mrs. David M. Hoovler

Dr. and Mrs. John C. Hordines  
Mr. Cornelius Howland  
Ms. Jamie Hritz  
Dr. Geoffrey Hulse  
IBM Corporation -  
Accounts Payable Center  
IBM Matching Grants Program  
Ms. Erin Idsall  
Mr. and Mrs. Gary A. Irving  
ITC - Independent  
Telecommunications Corp.  
Jewish Federation of Greater  
Orange County, Inc.  
Mr. Arthur Jones  
Mr. Michael Jones  
Mr. Thomas Jones  
Mr. Walter Jung  
Ms. Louise Kanian  
Ms. Adele Kannenberg  
Ms. Sandra K. Karmazin  
Kavanagh's Jewelers  
Robyn Kelley  
Joanne Kelly  
Ms. Nicole Kelly  
Mr. and Mrs. Michael Kiraly  
Dr. and Mrs. John E. Knipp  
Dr. and Mrs. Prabhakar Kocherlakota  
Ms. Gina Kowal  
Mrs. June L. Kreisberg  
Mr. and Mrs. Neil Kreitzer  
Mr. and Ms. William R. Kulikowsky  
Mr. and Mrs. Jacques Laine  
Laser & Cosmetic Surgery Specialists, PC  
Mr. and Mrs. Bryce Lee  
Ms. Sheila Levinstein  
Dr. Yu-Kuan Lin  
Stacey A. Lloyd  
Mr. and Mrs. David Longinott  
Ms. Elaine Lopez  
Mr. and Mrs. Christopher LoPresti  
Dr. and Mrs. Stephen Luloff  
Mr. Daniel MacKay  
Mr. Louis Mangelli  
Ms. Lauren Mangelli  
Mr. Patrick Mainey  
Henry F. and Vickie Malanowski

# 2017 DONORS

---

Ms. Teresita Manipon  
Mr. Christopher Martinez  
Mr. and Mrs. Edward L. Mason  
Mr. Kenneth J. Masten  
Mr. J. Mastrianni  
Mr. and Mrs. Louie Mazzella  
Mr. A. Vincent Mazzie  
Mr. and Mrs. Timothy McCarty  
Mr. and Mrs. Frank McDaniel  
Ms. Elizabeth McGowan  
Mr. JP McGuirk  
Ms. Kaitlyn McHale  
Mr. Joseph McPheter  
Mr. Christopher E. Melley  
Dr. and Mrs. David Mendelson, MD  
Ms. Erin J. Miller  
Mr. and Mrs. Steven I. Milligram  
Mr. and Mrs. Marcus H.  
Millsbaugh, Jr.  
Mr. and Mrs. David Mires  
Mr. Karl Moritz  
Ms. Laura Mowat  
Mr. and Mrs. Gerald F. Mueller  
Mr. and Mrs. William Murphy  
Ms. Heather R. Murphy  
Ms. Theresa Muschett-Diaz  
Mr. and Mrs. Kurt Najork  
Mr. and Mrs. Brent Napoleon  
Mr. and Mrs. Victor Nazario  
Ms. Catherine Niebanck  
Mr. Kevin Northrop  
Ms. Marcia Orloff  
Mr. Craig Ott  
Mr. William Owen  
Mr. and Mrs. Giovanni Palladino  
Dr. Mehul Patel  
The Honorable and Mrs. Pano Z.  
Patsalos  
Patterson Investor Properties LLC  
Mr. James Pavelock  
Mr. and Mrs. Reid D. Pavia  
Ms. Donna Pederson  
Ms. Patricia Pelella  
Mr. and Mrs. Murray J Peppersberg  
Mr. Joseph Pesavento  
Dee Petrillo  
Mr. E. Scott Piotti

Agnieszka Piqueras  
Mr. and Ms. Matthew S. Pirog  
Mr. Arthur Pizzuto  
Mr. and Mrs. Louis S. Plaut  
Mr. and Mrs. John A. Popiel  
Arminda D. Porretto  
Mr. Christopher Powers  
Price Chopper's Golub Foundation  
Prudential Financial Inc.  
Miss Jennifer Quinones  
Dr. and Mrs. Ramon Rivera  
Mrs. Eileen Robusto  
Ms. Mary Ellen Rogulski  
Mr. Jude Dure and  
Mrs. Rebecca L. Rosario-Dure  
Ms. Elizabeth Rowley  
Sally's Fish Market  
Mrs. Gladys Samaniego  
San Miguel Academy of Newburgh  
Mr. Daniel J. Saracino  
Mr. Alan F. Sargeant  
Mr. and Mrs. Derrick Saunders  
Dr. Manita Sawhney  
Mr. and Mrs. Harshdeep and  
Sarvneet Sawhney  
Mr. and Mrs. Gerard Sawicki  
Mr. and Mrs. Kenneth A. Schmidt  
Mr. William Schueler  
Mr. and Mrs. Daniel Schulyer  
Ms. Linda Schuyler  
Ms. Elizabeth C. Schwartz  
Dr. and Mrs. Thomas Scieppi  
Edward and Ruth Segali  
Mrs. Ishmeet Sethi  
Anita Sharp  
Roger D. Shields  
Mr. David Shiu  
Leonard Shustack  
Ms. Tami Siedler  
Ms. Sara Silbiger  
Ms. Alicia Simmons-McDonald  
Dr. Daniel J. Singer  
Dr. and Mrs. Chanchal Singh  
Mr. Sarabjit Singh  
Mr. Christopher J. Sluszka  
Mr. and Mrs. Donald B. Small  
Mr. and Mrs. Edward Smith

Mr. and Mrs. Gary R. Smith  
Ms. Linda S. Smith  
Ms. Patricia A. Smith  
Mr. Sam Soto  
Ms. Nancy Sposato  
Steffy Law PC  
Mr. and Mrs. Jason Stephenson  
Mr. and Mrs. George Stradar  
Mr. and Mrs. Thomas P. Sullivan  
Mr. David Sunderlin  
Mr. Gary Swaybill  
The Benevity Community Impact Fund  
The Farmington Company  
The Flag Guys  
The Stylist's Chair  
Mr. Gary Theodore  
Thomas Edward Hair Salon  
Ms. Bernadette P. Thompson  
Mr. Franz Tillman  
Mr. and Mrs. Hector Torres  
Ms. Christina Troy  
Mr. and Mrs. Rodney Tudor  
U. Alsdorf Charities  
Mr. and Mrs. Roy D. Vasta  
Christian Venturini, IT Services Manager  
Mr. and Mrs. Ronald D. Verge  
Mr. and Ms. George F. Wallace  
Ms. Elizabeth Walwyn  
Mr. Mark Weis  
Dr. and Mrs. Wayne Weiss  
Miss Juliana Weiss  
Ms. Sandra Williamson-Cader  
Wireless Zone New Windsor  
Mr. and Mrs. John Wood  
Dr. Ying Yang  
Ms. Victoria A. Zamudio  
Dr. and Mrs. Majed E. Zouhairi  
Ms. Irene K. Zych

# 2017 GALA SPONSORS

---

## **Premier Sponsor**

St. Luke's Cornwall Hospital Medical Staff

## **Diamond Sponsor**

Bonura Hospitality Group  
RestorixHealth

## **Platinum Sponsor**

The Littman Family  
Unitex Textile Rental Services

## **Centerpiece Sponsor**

Hudson Valley Brain and Spine Surgery

## **Valet Sponsor**

GNVHA Ventures, Inc.

## **Gold Sponsor**

Hudson Valley Imaging  
Fresenius Kidney Care  
Mid-Hudson Anesthesiologists, P.C.  
Montefiore Health System  
Patient Matters

## **Silver Sponsor**

Barton Chevrolet Cadillac  
Clifton Budd & DeMaria, LLP  
Collection Bureau of the Hudson Valley  
Construction Contractors Association of the Hudson Valley  
Crothall Healthcare  
Crystal Run Healthcare  
Envision Physicians Services  
Fabricators and Erectors Association of the Hudson Valley  
The Heart Center, HealthQuest  
Mobile Life Support Services

Premier Medical Group

RICOH

Surgical Affiliates Management Group, Inc.

WILLCARE

Wingate Healthcare

## **Carousel Sponsor**

Quigley Brothers Funeral Home

## **Bronze Sponsor**

Burke Rehabilitation and Research Hospital

Central Hudson Gas & Electric Corporation

Gentech Ltd.

Horizon Family Medical Group

Marist College

United West Labs, Inc.

## **Other Sponsors**

Clara Louise Gould

Empire State Bank

INSPIRE- The CP Center

Mercer

Smitchger Realty



# 2017 GOLF AND TENNIS SPONSORS

## Diamond Sponsor

RestorixHealth

## Platinum Sponsor

Mid-Hudson Anesthesiologists, P.C.

## Gold Sponsor

Bonura Hospitality Group

Clifton, Budd, & DeMaria, LLP

Collection Bureau of the Hudson Valley

Construction Contractors Association

Fabricators and Erectors Association of the  
Hudson Valley

Laborer's International Union of North America  
Local No. 17

Mobile Life Support Services

Montefiore Health System

Surgical Affiliates Management, Inc.

Unitex Textile Rental Services

## Eagle Sponsor

Crothall Healthcare

Hudson Valley Imaging

Painters Local 155 L.M.C.

## Hole-In-One Sponsor

Barton Chevrolet Cadillac

## Par Sponsor

All Bright Electric

Crothall Healthcare

Crystal Run Healthcare

Crystal Run Health Plans

Hazard's Pharmacy

Hospice of Orange and Sullivan Counties

Mount Saint Mary College

Perreca Electric

United Healthcare

## Net Sponsor

Horizon Family Medical Group







## “I tell everybody that St. Luke’s Cornwall Hospital saved my life.”

“Although I didn’t want to believe it, on the night of March 10<sup>th</sup> I was having a heart attack. My wife brought me to St. Luke’s Cornwall Hospital. *There isn’t a doubt in my mind that they saved my life.*”  
– LYNN WARREN, SLCH GRATEFUL PATIENT

While our verified Level III Trauma Center and a team of cardiologists stand ready when you need us, the Cardiovascular Institute at St. Luke’s Cornwall Hospital includes a staff of more than 35 professionals dedicated to helping you make choices that can lead to a healthier heart before an emergency.

One way to detect potential heart disease early is to take advantage of the many diagnostic procedures we offer, including coronary calcium scoring. Learning your score can aid in the detection of heart disease and allow for earlier intervention when preventative therapies have the largest impact.

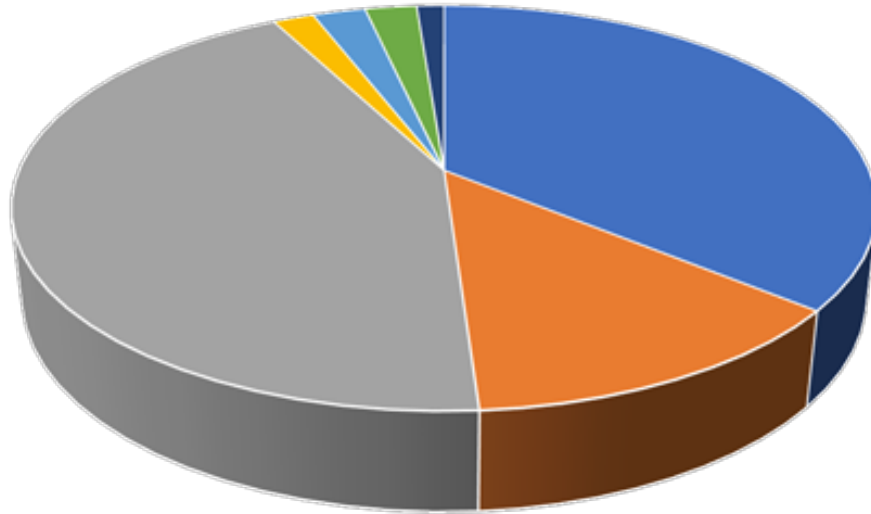
*We truly are with you, for life.*

SLCH received a ninth “Get With The Guidelines Gold Plus Performance Achievement Award” from the American Stroke Association. Hospitals achieve this award for achieving specific quality improvement measures outlined by the American Heart Association/American Stroke Association for the treatment of stroke patients.



# 2017 FINANCIALS

## OPERATING EXPENSES

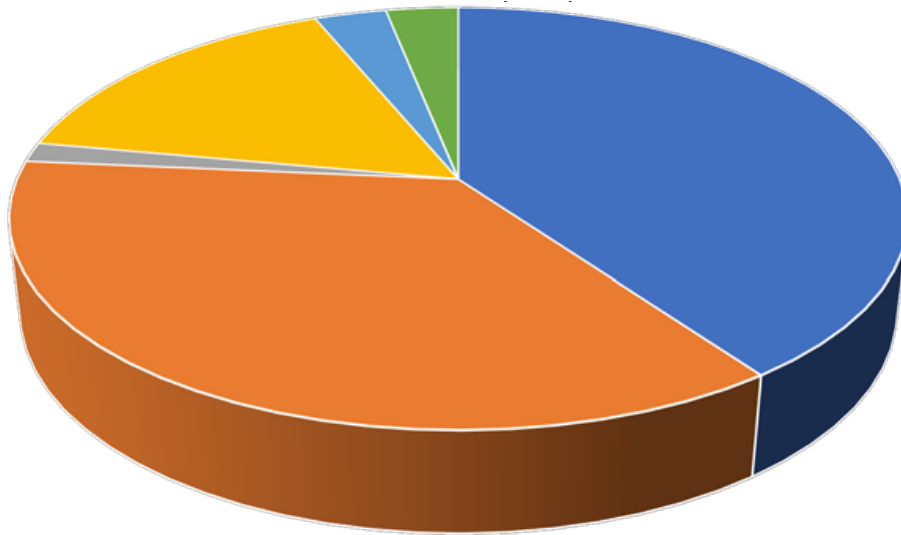


- Salary and Wages
- Employee benefits
- Supplies and Non salary Expense
- Corporate Overhead
- Provision for Bad Debt
- Depreciation

Salary and Wages	\$78.2 million
Employee benefits	\$28.3 million
Supplies and Non salary Expense	\$94.3 million
Corporate Overhead	\$4.0 million
Provision for Bad Debt	\$5.1 million
Depreciation	\$5.0 million
Interest	\$2.7 million
<b>Total Operating Expenses</b>	<b>\$217.6 million</b>
Charity Care	\$4.0 million

# 2017 FINANCIALS

## OPERATING REVENUE



■ Medicare ■ Comercial/HMO ■ Self Pay ■ Medicaid ■ Other Payers ■ Other Operating

Medicare	\$84.7 million
Comercial/HMO	\$76.6 million
Self Pay	\$3.2 million
Medicaid	\$33.5 million
Other Payers	\$6.5 million
Other Operating	\$6.6 million

**Total Operating Revenue** \$211.1 million

St. LUKE'S CORNWALL  
 HOSPITAL  
A Member of the **Montefiore**  
HEALTH SYSTEM, INC.